





ABOUT US

Core Engineering & Construction (CEC) is a subsidiary of the Paris United Group. Our journey began in 2013 as YellowTech, where we laid the foundation for excellence in Construction & Engineering Services. Over the years, we have evolved and expanded our capabilities to become a trusted leader in the industry. Today, operating under the name Core Engineering & Construction (CEC), we continue to uphold the same principles of quality, innovation, and customer satisfaction that have been the cornerstone of our success. While YellowTech remains a part of our legacy, CEC focuses on delivering core construction services, including civil construction, MEP works, interior fit-out, structural steel works, and annual maintenance contracts (AMCs).

Since its inception, we have successfully completed various projects and have established ourselves as a renowned, professionally managed contractor. Adhering to the higher standards set by the consultants and clients we have completed several major Electro Mechanical turnkey projects in High Rise Buildings, Shopping Malls, Research Facilities, Factories.

Our success is based on an efficient organization and dynamic entrepreneurial management, developed through experience and implemented with strategic plans committed to client's satisfaction. We bring an unmatched combination of knowledge, experience and commitment to each and every job independent of its vastness. Our continuous quests for quality have enabled us to deliver projects safely on schedule, within budget without compromising on the quality the client/consultant have determined.

WHY CHOOSE US

We create pathways to support our client's requirement redefining engineering excellence. The firm employs a dynamic team of engineers, project managers and technically trained employees with a broad range of experience. This allows us to provide high quality multidisciplinary services. Core Engineering and Construction has developed with its years of expertise, an in-depth understanding of our customer's need which helps to serve them better, assuring high quality of services to individuals. Core has a vast experience of more than a decade of operation in a multi-industrial platform that has helped in serving a client base including large companies to specialised low volume manufacturers; outstanding public/private sector, joint ventures, consortiums and other undertakings throughout South India and Qatar.



TABLE OF CONTENT

1. COVER DESIGN
2. ABOUT US | WHY CHOOSE US
3. OUR MISSION | OUR VISION | QUALITY POLICY | OUR EXPERTISE
4. OUR SERVICES
5. CIVIL | MEP | CONSULTATION & DESIGN
6. FITOUT | MAINTAINANCE
7. INTERIOR & EXTERIOR DESIGN
8. PROJECT COMPLETED
9. WORK GOING ON

OUR MISSION

To Core Engineering and Construction High Quality, Cost Effective service & products to our clients by employing and supporting a motivated, flexible and focused team and to actively participate in building & developing an Engineering Business Enterprise based on sound engineering principles coupled with ethical business practices.

OUR VISION

Committed in designing a new concept of living, to build perpetual trust with clients and providing people the essence of what they need: a personalized ideal life and to be leading provider of quality Electro Mechanical and Engineering services across the globe.

QUALITY POLICY

We base our management philosophy on the highest quality standards and have implemented a phased review process to maintain and enhance the quality of our products and services.

OUR EXPERTISE

Core Engineering and Construction manages, executes Fit-Out jobs and all sizes of MEP Projects besides providing Engineering, Procurement, Installation and Commissioning services covering all types and scales of project volume.

- Commercial, Residential Buildings
- Hotels, Banks
- Hypermarkets, Malls, Shop Outlets
- Restaurants, Showrooms
- Villas and Palaces
- Industrial Buildings
- Hospitals and Medical Centres
- Schools, Universities and Educational Institutions
- Business Centres





OUR SERVICES

CIVIL

Core Engineering and Construction offers comprehensive civil construction services which encompass a wide range of projects, including residential, commercial, industrial, and public infrastructure developments. Our team of experienced architects, engineers, and designers collaborates closely with clients to understand their vision and requirements. We undertake detailed design and planning processes, taking into account factors such as site analysis, structural integrity, functionality, aesthetics, and regulatory compliance. Through meticulous planning, we ensure that every aspect of the construction project is carefully considered and optimized.

PROJECT CONSULTATION & DESIGN

Project consultation and design are crucial stages in any project, as they lay the foundation for a successful outcome. During these stages, professionals collaborate with clients to understand their goals, constraints, and preferences, and develop a comprehensive plan to bring the project to life.

Project consultation involves engaging with the client to gather information about their project requirements, budget, timeline, and any specific challenges or constraints. This initial phase is crucial for establishing a clear understanding of the client's vision, as well as identifying any potential issues that may arise during the project.

Once the initial consultation is complete, the design stage begins. Design professionals work closely with the client to create a concept that aligns with their vision, functional needs, and desired aesthetic. This process involves developing detailed plans, layouts, and 3D renderings to illustrate how the space will look and function. It may also include selections of materials, finishes, colors, and furniture, as well as considerations for lighting, HVAC systems, and other technical aspects.

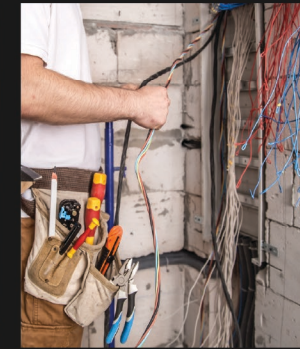
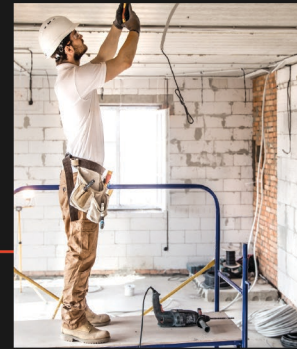
MEP

MEP, or Mechanical, Electrical, and Plumbing, refers to the integrated systems that are crucial for the functioning and operation of buildings. MEP systems are responsible for delivering basic necessities such as heating, ventilation, air conditioning, electrical power, lighting, fire protection, and plumbing services.

Mechanical systems in MEP are responsible for regulating temperature, humidity, and airflow within a building. This includes heating, cooling, and ventilation systems that ensure occupant comfort.

Electrical systems encompass the distribution and supply of electrical power within a building, including wiring, switchboards, and electrical panels. Additionally, they involve the installation of lighting systems, fire alarms, and electrical safety measures.

Plumbing systems consist of the design, installation, and maintenance of water supply, drainage, and sanitation systems within a building. This includes pipes, fixtures, fittings, pumps, and water storage tanks.

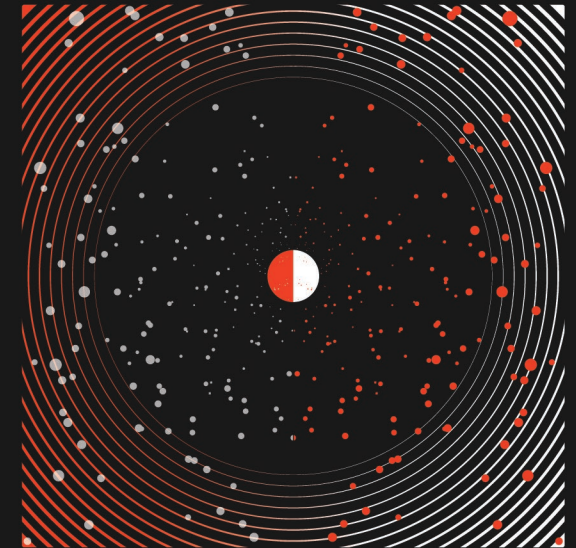


FITOUT

Project fitout refers to the process of transforming an empty or shell space into a functional and customized interior space that meets the specific needs and requirements of a client or tenant. This process often involves the design, planning, and construction of various elements such as walls, flooring, ceilings, lighting, furniture, and other fixtures, to create a fully operational and visually appealing space.

Fitout projects can be found in various sectors, including commercial, retail, hospitality, healthcare, and residential. The goal of a fitout project is to optimize the use of space, enhance the functionality and efficiency of the area, and create an environment that aligns with the client's brand image or desired aesthetic.





MAINTAINANCE

How to Keep Your Property in Good Condition

Building maintenance refers to the ongoing efforts and tasks undertaken to keep a building or facility in good condition. It includes both preventive and corrective measures to ensure the safety, comfort, and functionality of the structure. Building maintenance includes tasks such as cleaning, landscaping, and electrical system maintenance and aims to preserve a safe, functional, and comfortable environment for tenants at all times. Of course, building maintenance isn't only beneficial to tenants. Building owners can maximize the resale value of their properties by keeping all assets in good working condition. Depending on the type of property, it may require a "Jack of all trades" or several workers with varying technical specializations.

Examples of Building Maintenance

Routine tasks include:

- Landscaping, such as mowing lawns and trimming shrubs
- Inspecting outdoor lighting for damage
- Clearing gutters and drainages
- Cleaning outdoor spaces
- Sealing cracks in parking lots
- Inspecting ceilings and floors for water damage during winters
- Replacing HVAC air filters
- Servicing fire alarms and fire suppression systems
- Inspecting door and window alarm systems to ensure proper operation





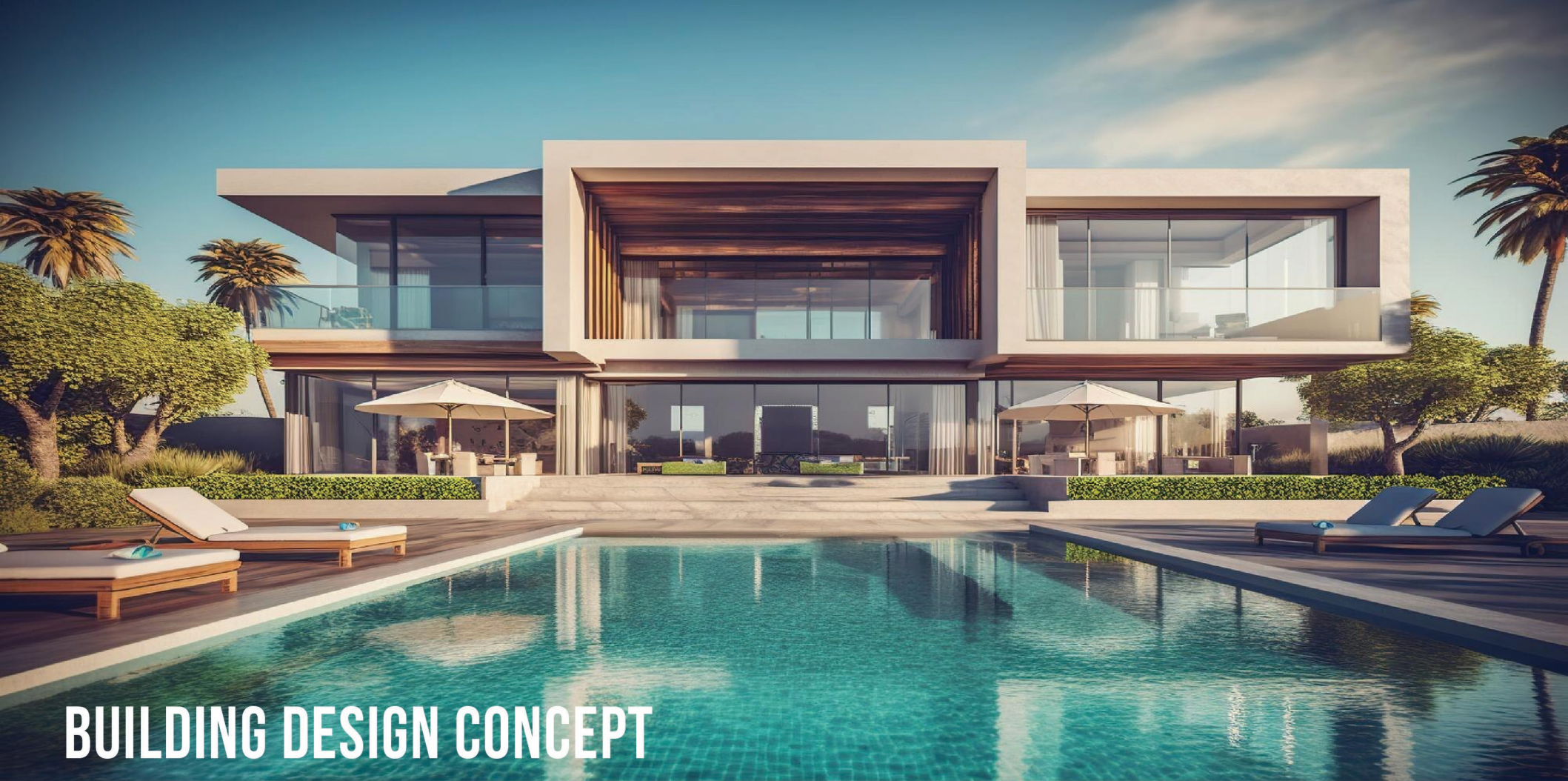
INTERIOR AND EXTERIOR DESIGN

Interior and exterior design play a crucial role in creating functional, aesthetically pleasing, and enjoyable spaces. Both disciplines focus on enhancing the look, feel, and functionality of the spaces we inhabit.

Interior design primarily deals with the layout, functionality, and aesthetics of indoor spaces such as homes, offices, hotels, restaurants, retail stores, and more. Interior designers consider various factors such as the client's preferences, needs, budget, and the purpose of the space to create a design that reflects their vision while maximizing functionality and comfort. They select and arrange furniture, fixtures, lighting, colors, textures, and materials to create a cohesive and visually appealing environment.

Both interior and exterior design are collaborative processes that involve close communication between designers, clients, architects, contractors, and other professionals. The goal is to create spaces that reflect the client's identity, meet their functional requirements, and provide a delightful experience to the inhabitants or visitors.





BUILDING DESIGN CONCEPT

1. Research and Analysis: Begin by researching and analyzing the project requirements, site conditions, and any specific constraints or considerations. Understand the purpose of the building, the needs of the users, and the context of the site.
2. Identify Key Design Goals: Determine the key design goals and objectives for the project. Consider factors such as functionality, aesthetics, sustainability, and user experience. These goals will shape the design concept and help prioritize design decisions.
3. Develop a Design Narrative: Create a story or narrative that connects the building to its context, users, and purpose. This narrative should be based on the project's unique qualities and can provide inspiration and direction for the design concept.



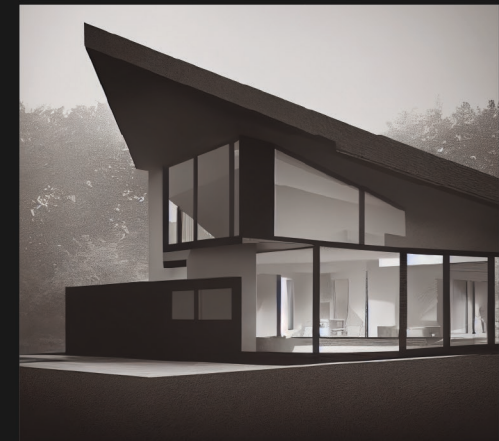
BUILDING DESIGN CONCEPT



4. Conceptualize Ideas: Brainstorm and generate ideas that align with the design goals and narrative. Experiment with different forms, materials, spatial arrangements, and architectural elements. Sketch or use digital tools to visualize and explore various design options.

5. Select a Design Concept: From the ideas generated, select a design concept that best represents the project's goals, narrative, and unique qualities. The concept should communicate the essence of the building and guide the design in a cohesive and meaningful way.

6. Develop the Design Concept: Once the design concept is selected, further develop and refine it. Consider the spatial organization, circulation patterns, sustainable strategies, material choices, and other design elements that will bring the concept to life. Collaborate with other design professionals as necessary to ensure the feasibility and functionality of the design.





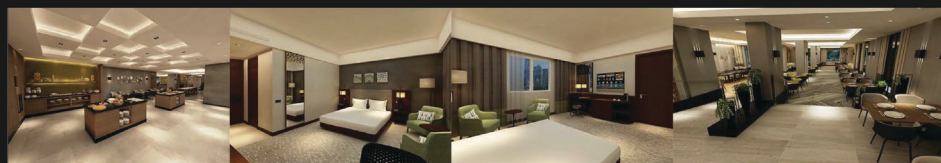
PARIS HYPERMARKET

Ibn Seena Street-950 | PB No : 202061
Location: Muntazah | Doha - Qatar



PARIS HYPERMARKET

Industrial Area Street 33 | Al Asmaq Complex
Location: Al Attiyah | Doha - Qatar



HILTON GARDEN INN Civil & MEP Works on EPC Basis Location: Doha



6 VILLA
Complete MEP Works on EPC basis
Location: Muither, Qatar
Client: Laraib Trading and contracting co.

Laraib Trading and Contracting

Location: Muither, Doha - Qatar

PROJECT COMPLETED



TRAM DEPOT

Interior Fit -Out Design and Build for MEP
Location: Msheireb, Qatar
Client: Msheireb Properties
Main Contractor: Brookfield Multi -Plex



ASCOT HOTEL (JUDE TOWER)

Complete MEP Works on EPC basis
Location: Doha
Client: ISG
Main Contractor: Simplex



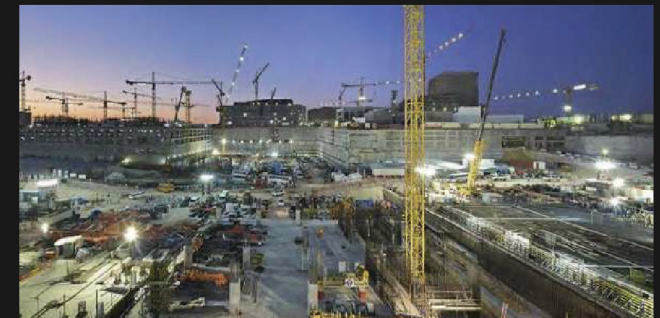
TOYOTA

Electro Mechanical Installations for Car Park and Administrative Building.
Location: Industrial Area Doha.
Client: TOYOTA



AL BIDDA TOWER

Interior Fit Out Jobs for 16 Floors
Location: Doha
Client: Qatar Football Association
Main Contractor: BLUU



TRAM DEPOT

Interior Fit -Out Design and Build for MEP.
Location: Msheireb, Doha.
Client: MSHEIREB PROPERTIES
Main Contractor: BROOKFIELD MULTI -PLEX



PARIS HYPERMARKET - Al Wakrah

Al Noor Street -854 | Zone 90 | Doha - Qatar



NILA KITCHEN

Complete MEP Fit Out Works on EPC Basis | Location : Doha



VILLA PROJECT

Project : 1 Nos Villa (1040 sqr Mtr)
Location : Kharthiyat | Doha - Qatar



HAMLEYS

Complete MEP Fit Out Works on EPC Basis | Location : Doha



Construction of Residential Buildings

Project : 2 Nos Twin Villa (1200 sqr Mtr each Villa)
Location : Matar Qadeem , Old Air port | Doha - Qatar



WAREHOUSE & LABOUR ACCOMADATION

Project : (1500 sqr Mtr)
Location : Industrial Area, Street No.14 | Doha - Qatar



BUILDING MATERIEL STORE, SHOWROOM WITH OFFICE, LABOUR ACCOMADATION & GUARD ROOM

Location : Birkat Al Awamer | Doha - Qatar



VILLA PROJECT

Project : Villa (960 sqr Mtr)
Location : Saylia | Doha - Qatar





PARIS HYPERMARKET
Muthier, Doha - Qatar

WORK GOING ON



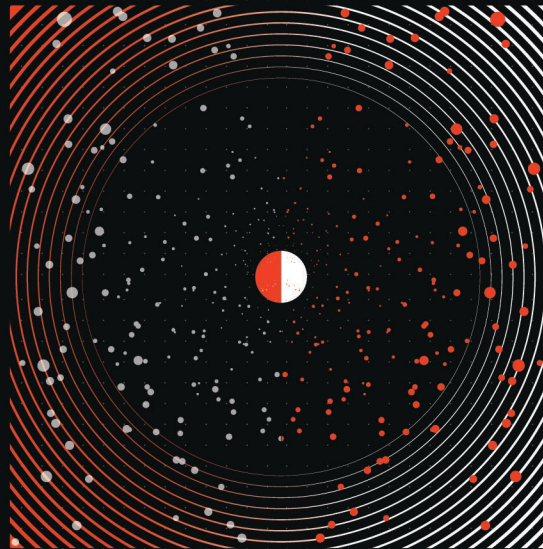
Paris United Group

Office Design
Location: Barwa Commercial Avenue | Sayer-8
Client: Doha - Qatar



HIA PROJECT FFL1, FFL2, AM5

MEP Works on EPC Basis
Location: Hamad International Air Port
Client: Poltrona Frau Qatar



www.coreengineeringqa.com | www.parisarabia.com

[@projectmanager@yellowtech.com.qa](mailto:projectmanager@yellowtech.com.qa) | [+974 30175591](tel:+97430175591) | [+974 70727567](tel:+97470727567) | [+974 70108090](tel:+97470108090)